



Portable Network Performance Analysis System

SmartBits[®] 200

Product Overview

The highly-portable Spirent Communications SmartBits 200 (SMB-200) is a 4-port performance analysis system that can be easily dispatched to the test site. With GPS support, the SMB-200 can also be used to create a distributed performance analysis system for measuring end-to-end performance, including one-way latency and latency variation. The SMB-200 is based on the same industry standard as the SMB-2000. The SMB-200 and SMB-2000 also share the same software and SmartCards.

With increasingly complex hybrid networks and deployments of advanced technologies, the SMB-200 is the most compact and powerful performance analyzer on the market for end-to-end testing, with options for testing 10/100/1000 Mbps Ethernet, ATM, and Frame Relay devices. The SMB-200 supports sophisticated automated industry standard performance tests as defined in RFCs 1242, 1944, 2285, and 2432.

The SMB-200 is Designed for:

- Network Equipment Manufacturers: Test your device, then carry it along with an SMB-200, to your customer site to prove your device's performance.
- Evaluation Labs: Test and certify different devices from various manufacturers to benchmark their performance.
- Telcos and ISPs: Perform end-to-end testing to check for trouble spots and weaknesses.
- Enterprise Users: Test end-to-end performance to monitor throughput and prevent overload.

SMB-200 Features

- Small, lightweight, and portable.
- Holds up to four SmartCards.
- Bundled with three PC-based software applications for comprehensive performance analysis (SmartWindow[™], SmartLib[™], and SmartApplications[™]).
- Supports a 10 Mbps Ethernet connection to a host PC.
- Provides remote control through the Internet. Can also be controlled via an RS-232 port.
- Provides GPS Support. You can remotely synchronize the timing mechanism of multiple chassis by using the external GPS kit. This allows accurate measurement of one-way latency and jitter, 100-ns accuracy time-stamps, and system start/stop.
- Includes RJ-45 expansion-in and expansion-out jacks. Accepts external 10 MHz clock signals.
- Up to 512 chassis can be synchronously connected by using SmartBits multi-chassis extension units.

Supported Applications

- AST II[™]
- SmartApplications[™]
- SmartCableModem Test[™]
- SmartFlow[™]
- SmartLib[™] Programming Library
- SmartMulticastIP[™]
- SmartSignaling[™]
- SmartTCP[™]
- SmartVoIPQoS[™]
- SmartWindow[™]
- SmartxDSL[™]
- Turn Up Connect[™]
- VAST[™]

Spirent

Communications

27349 Agoura Road
Calabasas Hills, CA
91301 USA
E-mail: productinfo
@spirentcom.com

Sales Contacts:

North America

+1 800-927-2660

Europe, Middle East,

Africa

+33-1-6137-2250

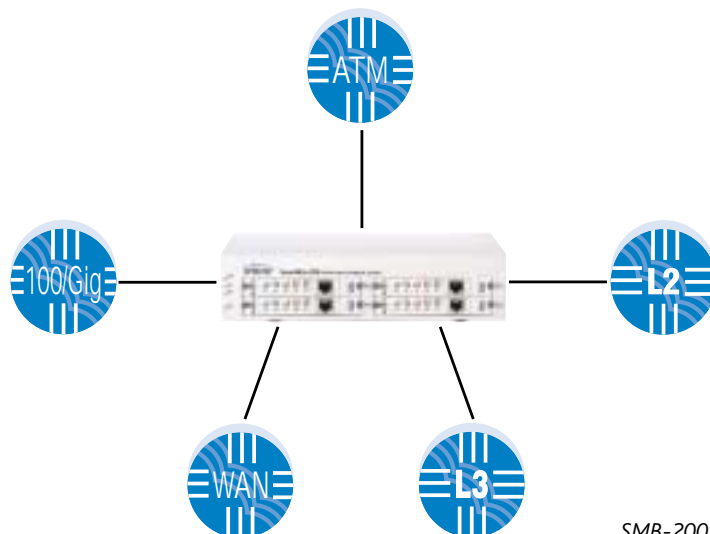
Asia Pacific

+852-2166-8382

All Other Regions

+1 818-676-2683

www.spirentcom.com



SMB-200 test applications



Analyze | Assure | Accelerate[™]

Supported SmartCards

SmartCard	Description
AT-9xxx	ATM 1-port SmartCards (OC-3c/STM-1, OC-12c/STM-4, DS3, E1, E3, DS1, 25 Mbps)
GX-1405B	1000Base-SX Ethernet, 1-port, multi-mode, 850nm
GX-1405Bs	1000Base-LX Ethernet, 1-port, single mode, 1310nm
GX-1420B	100/1000Base Ethernet, Copper, 1-port
GX-1421A	100/1000Base-T Ethernet, GMII/MII, 1-port
ML-5710A	10Base-T Ethernet/USB, 2-port, SmartMetrics
ML-7710	10/100Base-TX Ethernet, 1-port, SmartMetrics
ML-7711/7711s	100Base-FX Ethernet, 1-port, multi-mode/single mode, SmartMetrics
SX-7210	10/100Base-TX Ethernet, MII, 1-port
SX-7410B	10/100Base-TX Ethernet, 1-port
SX-7411	100Base-FX Ethernet, 1-port
WN-3405	WAN V.35, 6/8 Mbps, Frame Relay/PPP, 1-port, SmartMetrics
WN-3415	WAN T1/FT1, Frame Relay/PPP, 1-port, SmartMetrics
WN-3420A	WAN E1/FT1, Frame Relay/PPP, 1-port, SmartMetrics
WN-3441A	WAN T1 Frame Relay/PPP, channelized 4-port, SmartMetrics
WN-3442A	WAN E1 Frame Relay/PPP, channelized 4-port, SmartMetrics
WN-3445A	WAN DS3 Frame Relay/PPP, 1-port, SmartMetrics

Requirements

- One SMB-200 chassis and up to four SmartCards.
- One Ethernet cable and one 10/100 Ethernet card installed in the PC.
- An IBM or compatible Pentium™ PC running Windows 98/2000/NT, with mouse and color monitor.

Specifications

- SmartBits chassis with four SmartCard slots. Controllable over the Internet or from a PC equipped with SmartWindow.
- Input Power: 90-264 VAC. Nominal 115 or 230 VAC, 47-63 Hz.
- Dimensions: 12.25"W x 3"H x 12"D (31.4W x 7.7H x 30.8D cm).
- Weight: 5 lbs. (2.27 kg) fully loaded. Shipping weight approximately 8 lbs. (3.63 kg).
- Operating environment: 59° to 104° F (15° to 40° C); 20 to 80% relative humidity. Must have space for unimpeded airflow into the fans at the side of the chassis.

Ordering Information

SMB-200

SmartBits 200 (includes SmartWindow, SmartLib, and SmartApplications)

SUS-SMB

12-month Software Update Support Service (includes firmware support)



SMB-200

Spirent Communications
 27349 Agoura Road
 Calabasas Hills, CA
 91301 USA
 E-mail: productinfo@spirentcom.com

Sales Contacts:
North America
 +1 800-927-2660
Europe, Middle East, Africa
 +33-1-6137-2250
Asia Pacific
 +852-2166-8382
All Other Regions
 +1 818-676-2683

www.spirentcom.com

